



UK

ORIGINAL
CompostTumbler®
Assembly
Instructions





Dear Friend:

Thank you for purchasing the Original ComposTumbler. Properly assembled and operated, your new tumbler can go on giving you rich, healthy compost for years. And that in turn will give you a healthier, more beautiful and productive lawn and garden – naturally.

Your Original ComposTumbler has been shipped ready to be assembled. All of the parts and pieces you will need are included—all you supply are the proper tools and the labour.

This manual is designed to help you through the step-by-step assembly process and make it an easy and painless operation.

The entire assembly can be completed by just one person, although there are steps that would be easier with a second pair of hands!

You will probably find it easiest to assemble your Original ComposTumbler on or near the place where you intend to use it. While the completed assembly isn't heavy, it is somewhat bulky and awkward to move.

Work on a smooth surface to prevent scratching the paint on the drum.

Before you start:

Take the time to read this manual completely before you actually start the assembly. That way you can avoid any surprises halfway through the job.

Check the "Tools You Will Need" list below and make sure you have all of them handy. Having the proper tools can make the assembly much faster and easier.

Then, check over the parts included and compare them against the parts list on Pages 3 and 4. Make sure you have and can identify all of the parts for both the Frame and the Tumbler Drum before you start.

David Goss

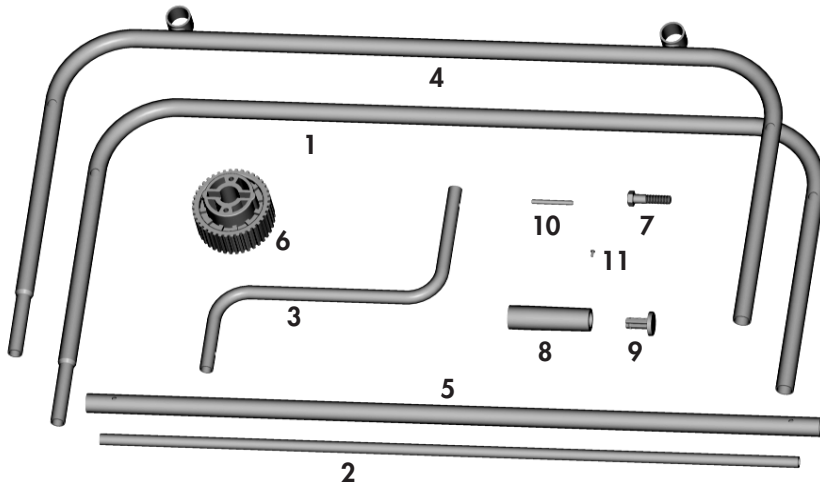
Tools You Will Need

Before you start, assemble the following tools:

- 3/8" spanner
- 7/16" spanner
- 3/4" spanner
- Adjustable spanner
- Regular screwdriver (flat head)
- Phillips screwdriver (cross head)
- Hammer

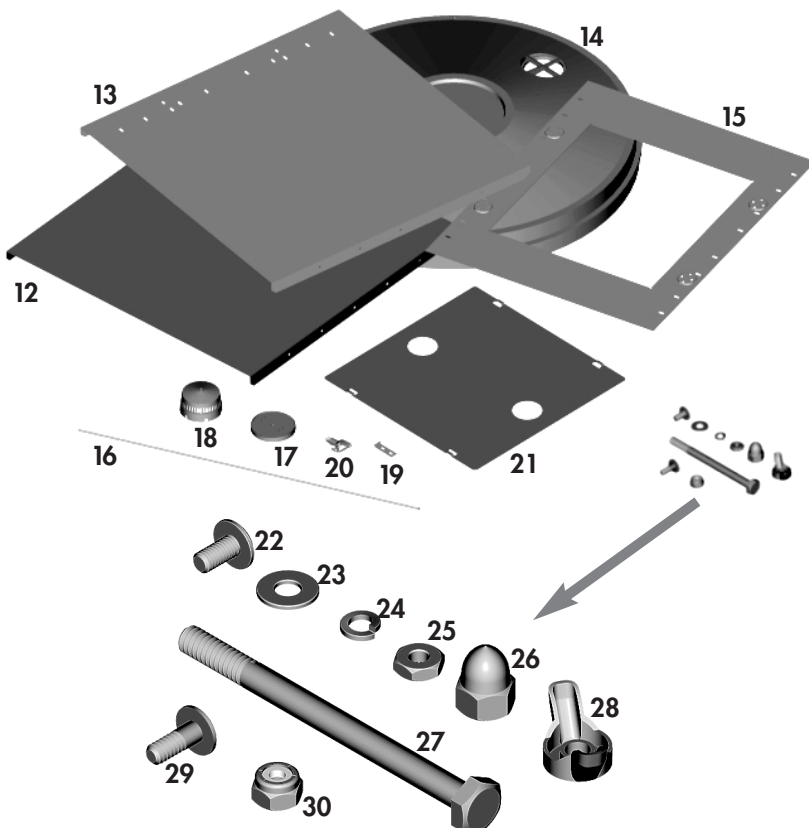
Everything else you will need is included with your ComposTumbler.

Parts For The Support Frame



ITEM NO.	PART DESCRIPTION	QUANTITY NEEDED
1	Lower Support	2
2	Support Spacer	4
3	Drive Handle	1
4	Upper Support (with axle rod carriers)	2
5	Axle Rods	2
6	Drive Wheels	4
7	1/2" x 2" Bolt	8
8	Grip	1
9	Grip Cap	1
10	Spring Pin	4
11	#6 Screw	1

Parts For The Tumbler Drum



ITEM NO.	PART DESCRIPTION	QUANTITY NEEDED
12	Drum Segment A	1
13	Drum Segment B	2
14	Endcap	2
15	Door Frame Segment	1
16	Tie Rod, 1/4"x 36 3/4"	4
17	Aerator Base (outside)	2
18	Aerator Cap (inside)	2
19	Latch Hook	2
20	Latch	2
21	Door	1
22	#10 Bolts	18
23	#10 Flat Washer	34
24	#10 Lock Washer	18
25	#10 Hex Nut	18
26	Acorn Nut, 1/4"	8
27	Bolt, 1/4" x 3-1/4"	2
28	Wing Nut, 1/4"	2
29	Shoulder Bolt	16
30	#10 Lock Nut	16

Note: The Tie Rods (Item 16) have been shipped inside the Support Spacers (item 2). Be sure to remove them before assembling the frame.

Support Frame Assembly

STEP 1: Lower Support Assembly

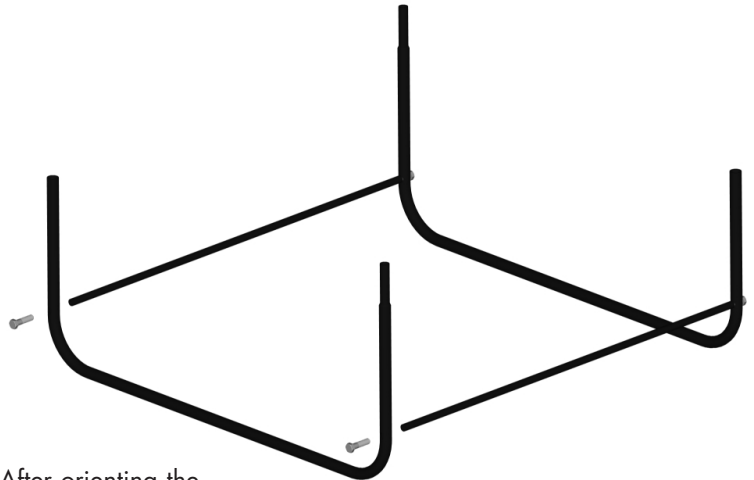
Select:

- 2 Lower Supports (item 1)
- 2 Support Spacers (item 2)
- 4 1/2" x 2" Bolts (item 7)

A. Make sure you have removed the tie rods from inside the support spacers.

B. Fasten one support spacer to lower support section with 1/2" bolt as shown in the adjacent photograph. After orienting the other lower support section in a position where the straight and smaller ended uprights are diagonally opposite each other, fasten this section to the opposite end of the support spacer with 1/2" bolt.

C. With lower support sections held upright, as above, fasten the other support spacer in a similar manner with 2 additional 1/2" bolts to form the assembly shown in the adjacent photograph.



STEP 2: Upper Support Assembly

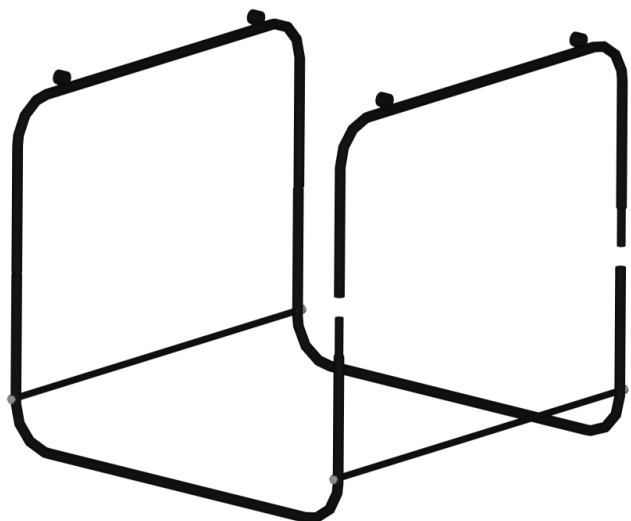
Select:

- 2 Upper Supports (item 4)
- 2 Support Spacers (item 2)
- 4 1/2" x 2" Bolts (item 7)

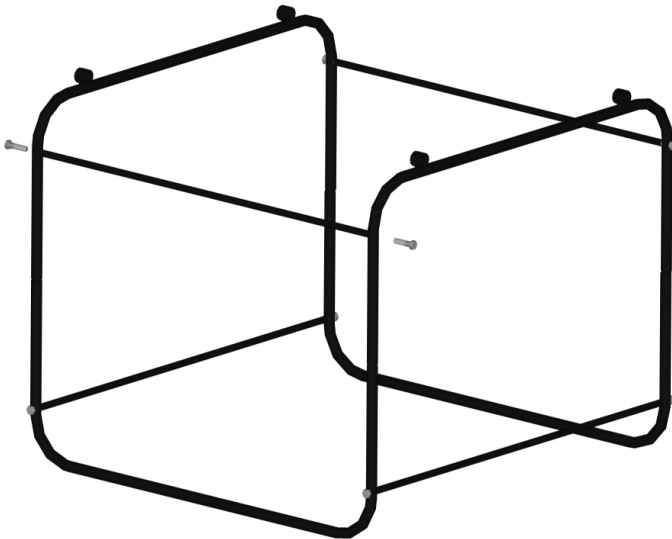
A. With open end facing down, position one upper support, parallel to a lower support spacer, over the upright sections of the lower support assembly, and oriented so that a small diameter end opposes a straight section.

(Note: Upper support sections (item 4 in adjacent photo) must be at right angles to lower support sections (item 1 in adjacent photo) to result in sufficient strength and stability to support the drum.)

B. Slip the ends of the upper support fully into and over the uprights of the lower support section. Repeat with the second support. *Continued...*



Support Frame Assembly



STEP 2 Continued:

- C. Fasten the support spacers to the upper supports, following the same procedure used in Step 1.

- D. Now is the time to secure the 8 bolts that turn into the support spacers. Using a 3/4" wrench, snugly tighten each bolt to stabilise support frame.



STEP 3: Axle & Drive Wheel Assembly

Select:

- 2 Axle Rods (item 5)
- 4 Drive Wheels (item 6)

- A. Slip the first axle through one of the axle rod carriers on an upper support.

- B. Place two drive wheels onto the axle inside the framework, making sure that the smaller, slotted ends of the wheels face away from each other and toward the ends of the axle (see photograph).

- C. Insert the end of the axle through the corresponding carrier on the other upper support. The two drive wheels are now suspended on the axle between the upper supports.

- D. Repeat the procedure with the second axle and two remaining drive wheels.

- E. Add a small amount of oil or grease to the end of the shaft. Then spin the axle to work the lubricant inside the axle support.



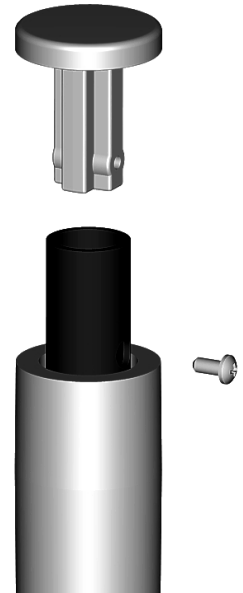
Support Frame Assembly

STEP 4: Drive Handle Assembly

Select:

- 1 Drive Handle (item 3)
- 1 Grip (item 8)
- 1 Grip Cap (item 9)
- 1 #6 Screw (item 11)

- A. Slide the Grip onto the end of the Drive Handle.
- B. Push the stem of the Grip Cap into the end of the Drive Handle, aligning the holes.
- C. Secure the Grip Cap to the end of the Drive Handle with the #6 Screw. Tighten the Screw until just snug. Note: The head of the Screw will be in the hole of the Drive Handle, locking the Grip Cap in position.

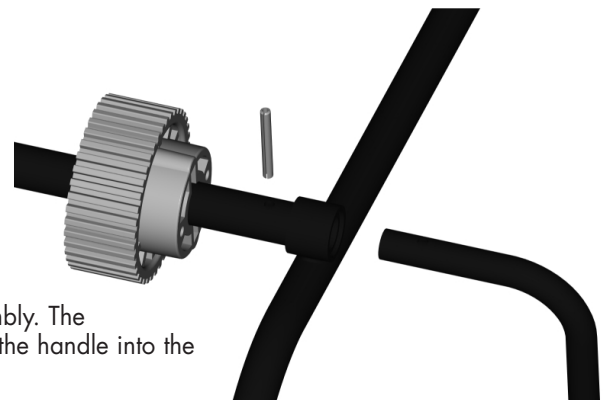


STEP 5: Spring Pin Assembly

Select:

- 1 Drive Handle Assembly (step 4)
- 4 Spring Pins (item 10)

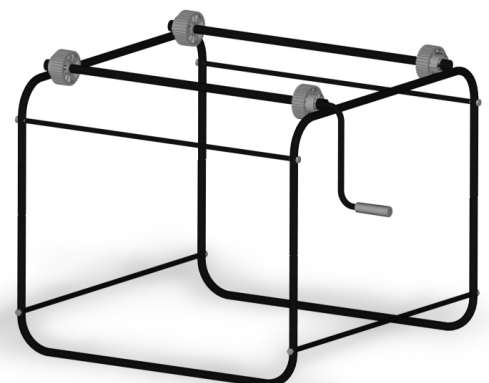
- A. Decide which corner of the assembly the drive handle is to be positioned on. (Any of the four corners will accept the handle assembly. The decision is entirely a factor of your convenience.) Insert the shaft of the handle into the end of the axle rod at the corner.
- B. Line up the holes in the handle shaft and the axle, then using a hammer, gently drive a spring pin through all holes.
- C. Drive a spring pin through the holes in each of the three remaining ends of the axle rods. To hold the drive wheels properly, the spring pin should extend an equal amount on each side of the rod at all four corners.
- D. Move each drive wheel into position against its corresponding spring pin, lining up the slots in the drive wheel with the pin. Slide the wheel over the pin at each corner.



The Support Frame for your ComposTumbler is now assembled and ready to hold the drum. Move the frame into its final position before placing the assembled drum on it. Double check to make certain that all nuts and bolts are tightly secured.

The Frame should be carefully positioned on level ground to insure best results. Uneven placement can make the Tumbler harder to turn.

Before operating, lubricate the 4 axle rod carrier sections.



Tumbler Drum Assembly

STEP 1: Initial Drum Body Assembly

Select:

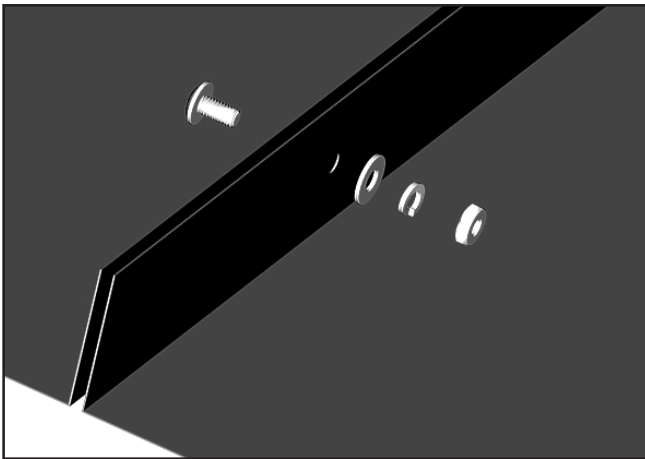
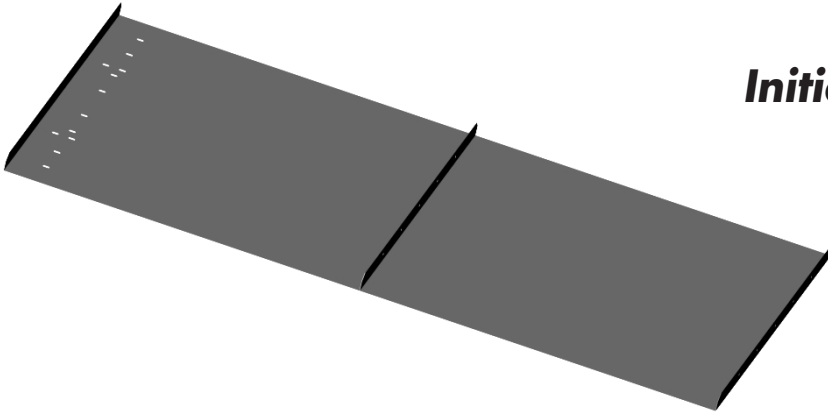
- 1 Drum Segment A (item 12)
- 2 Drum Segments B (item 13)
- 10 #10 Bolts (silver) (item 22)
- 10 #10 Flat Washers (item 23)
- 10 #10 Lock Washers (item 24)
- 10 #10-32 Hex Nuts (item 25)

A. Place Drum Segment A on a flat, smooth work surface with the flanged mixing fins facing upright. Align one Drum Segment B along one side of Segment A, matching up the holes in the fins.

B. Fasten Segment A to first Segment B using:
1 #10 Bolt (silver)
1 #10 Flat Washer
1 #10 Lock Washer
1 #10 Hex Nut
at each of the five holes. Hand tighten all bolts.

C. Attach the other Segment B to the other side of Segment A the same way.

D. Using the slotted screwdriver and 3/8" wrench, tighten all the fasteners.

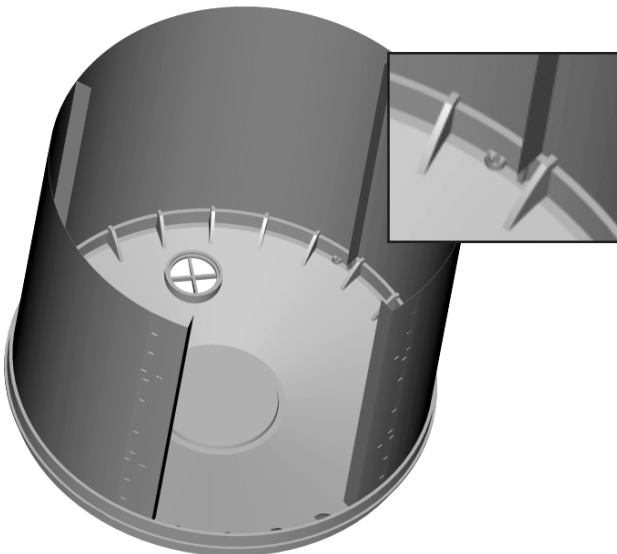


STEP 2: Drum Assembly

Select:

- 1 Endcap (item 14)
- 1 Drum Body Assembly (from Step 1)

A. Place the endcap, name plate down, on work surface. Note position of the screen on the endcap. Carefully pick up the 3 sectioned partially assembled drum from Step 1 and by bending it with the mixing fins on the inside, fit it into the rim of the endcap, forming three-quarters of the cylinder. Be careful to locate the centre panel (Segment A) adjacent to the screen and fit the mixing fins on both sides of this segment into the alignment slots of the endcap.





Tumbler Drum Assembly

STEP 3: Latch Attachment

Select:

- 1 Door Frame Segment (item 15)
- 2 Latches (item 20)
- 2 Latch hooks (item 19)
- 8 #10 Bolts (silver) (item 22)
- 8 #10 Flat Washers (item 23)
- 8 #10 Lock Washers (item 24)
- 8 #10-32 Hex Nuts (item 25)
- 1 Door (item 21)

A. With the Door Frame Segment resting on the work surface, attach the Latches to the panel on top of the raised mounting holes with the hooks toward the opening using:

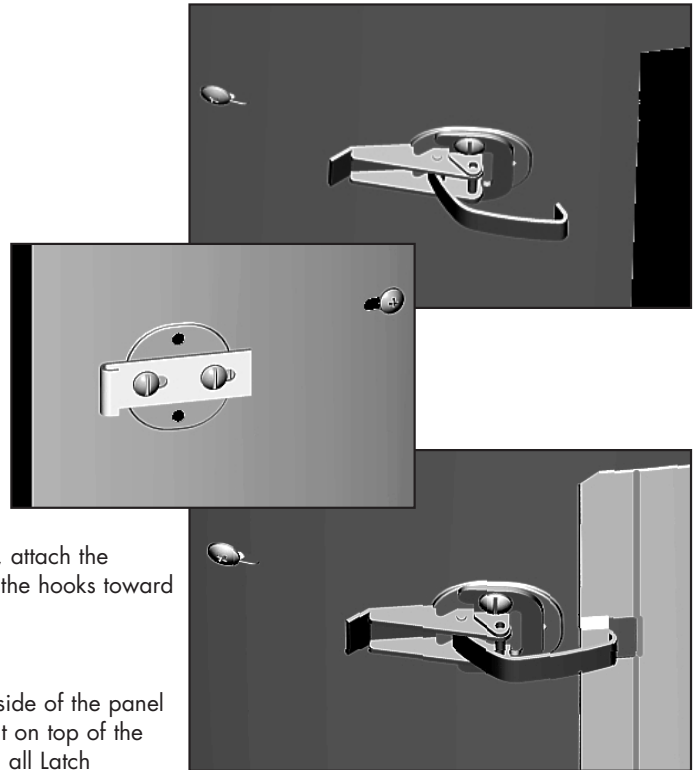
- 1 #10 Bolt (silver) 1 #10 Flat Washer
- 1 #10 Lock Washer 1 #10-32 Hex Nut

on each side of both Latches. Be sure the Bolt is on the underside of the panel in the recess, with the Flat Washer, Lock Washer and Hex Nut on top of the Latch. Use the slotted screwdriver and 3/8" wrench to tighten all Latch mounting fasteners.

B. Position the Latch Hooks on the other side of the panel opening with the hook ends toward the opening. Secure them the same way as the latches, but make the fasteners only hand tight.

C. Position the Door in place on the panel. Fit the notches on one end of the Door into the Hooks on the panel, and the hooks of the Latches into the notches on the other side of the Door. Close the latches to check their tension, they should "snap" closed, but should not be too difficult to open. Loosen and adjust the Latch Hook fasteners to get the proper tension, then tighten them with the slotted screwdriver and 3/8" wrench.

D. Remove the Door for the next step.

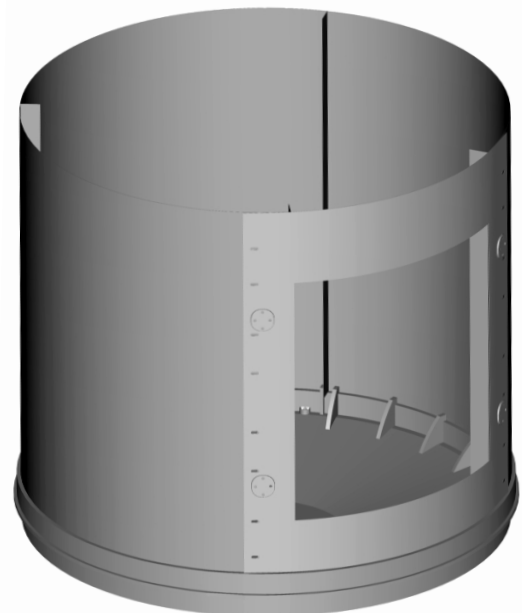


STEP 4: Door Frame Assembly

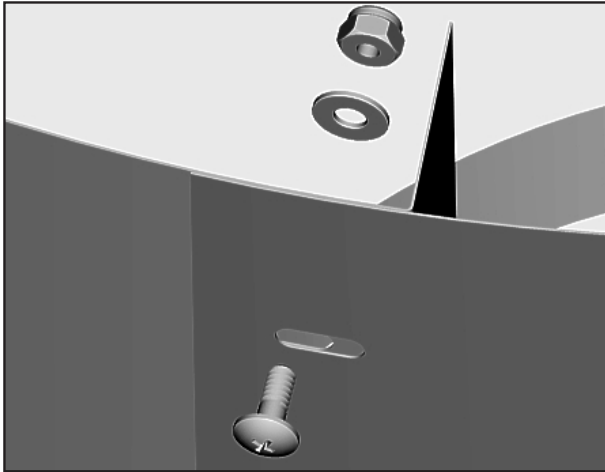
Select:

- 16 Shoulder Bolts (gold) (item 29)
- 16 #10 Flatwashers (item 23)
- 16 #10-24 Locknuts (item 30)

A. Carefully fit the Door Frame Segment (with latches installed) into the last open space of the Endcap to complete the Drum cylinder, overlapping the adjoining segments and lining up the hole patterns along both sides and into the rim of the Endcap. *Continued...*



Tumbler Drum Assembly



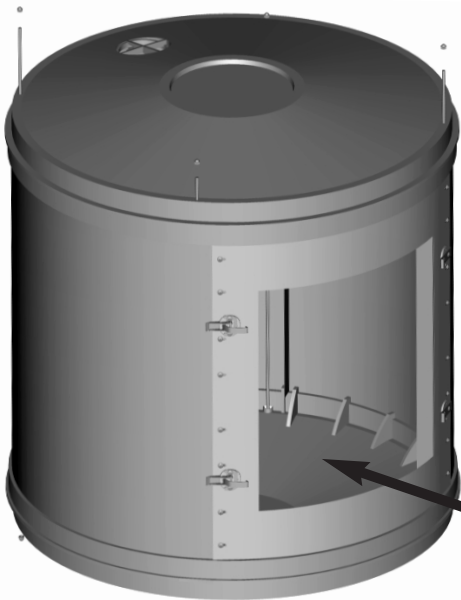
STEP 4 Continued:

B. Starting from the bottom and working from the outside, fasten the Door Frame Segment to the other Drum segments using:

- 1 Shoulder Bolt (gold)
- 1 #10 Flat Washer
- 1 #10-24 Lock Nut

at each of the eight slots on both sides of the Door Frame Segment. The Washers and Lock Nuts should be fastened inside the Drum body. The slotted holes in these Drum Segments will allow for adjustment to make placement of the second Endcap easier. Use the Phillips screwdriver and 3/8" wrench to turn the Lock nuts onto the Bolts until the nut bottoms out against the shoulder of the bolt.

The shoulder bolt should spin freely in the slotted hole and not be so tight that the bolt and nut clamp the metal panels together. If they do, loosen the nut 1/4 turn. This is to accommodate subsequent movement of these panels during operation resulting from changes in temperature.



STEP 5: Second Endcap Assembly

Select:

- 1 Endcap (item 14)
- 4 Tie Rods, 36 3/4" (item 16)
- 8 Acorn Nuts 1/4" (item 26)

A. Position the second endcap over the open end of the drum assembly, lining up the endcaps so that the screens are directly opposite each other and the flanges in the drum match the slots in the cap.

B. Lining up the two flanges furthest from the door frame with their corresponding alignment slots, work that part of the endcap carefully down onto the drum.

Then, working through the opening in the door frame, fit the two remaining flanges into their slots, adjusting the fit of the drum as necessary by sliding the door frame slightly. Be sure that the edges of the drum fit snugly into the rim of the endcap all the way around and that the flanges inside the drum are all fitted into the alignment slots on the cap.

C. Thread an acorn nut onto the end of one tie rod just until the nut holds (about two turns). Insert the other end of the tie rod through one of the four holes in the top endcap and run the rod down through the opposite hole in the bottom endcap. (Lead-ins have been provided to make this step easier.)

Continued...

Tumbler Drum Assembly

STEP 5 Continued:

D. Thread a second acorn nut onto the exposed end of the rod. If there is not enough exposed thread to start the nut or if the rod will not go all the way through the drum, double check to make sure the drum edges are fitted all the way into the rim of the cap and the flanges are in the alignment slots. If there is still a problem, loosen the acorn nut on the first end of the tie rod or press firmly on both endcaps to seat them fully.

E. Repeat steps "C" and "D" with remaining three tie rods and six acorn nuts, connecting the three remaining pairs of holes in endcaps. When all four rods have been positioned and secured, tighten all eight acorn nuts using an adjustable wrench at one end and a 7/16" wrench at the other. *Note: Do not overtighten.*

STEP 6: Aerator Assembly

Select:

- 2 Aerator Outside Sections (item 17)
- 2 Aerator Inside Sections (item 18)
- 2 Bolts, 1/4" x 3-1/4" (item 27)
- 2 Wing Nuts (item 28)
- 1 Door (item 21)

A. Position one Aerator Outside Section on the outside of the Door.

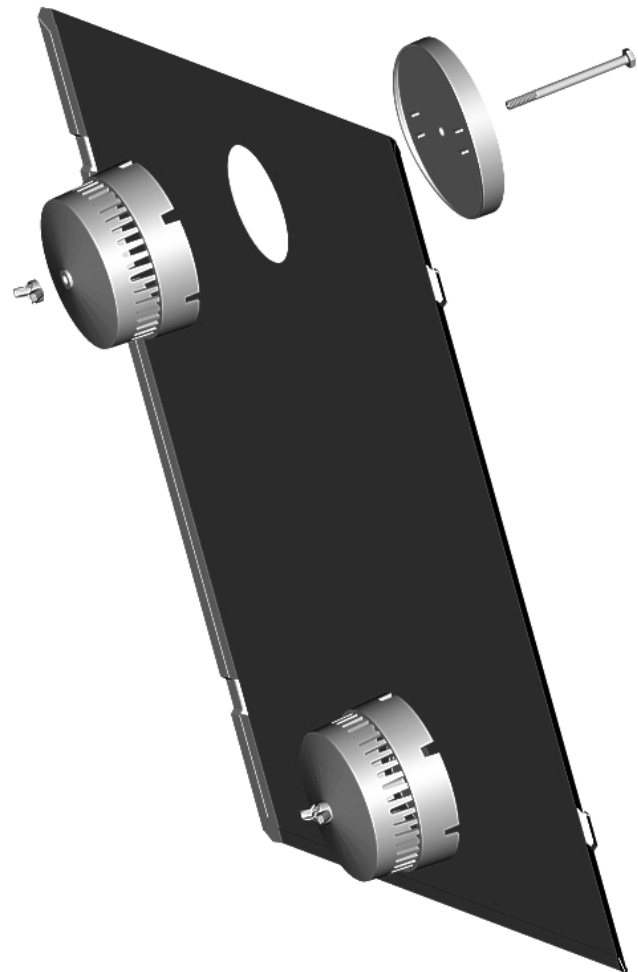
B. Insert one Bolt through the Aerator Outside Section and hole in the Door.

C. Slip one Aerator Inside Section over the Bolt on the inside of the Door, threading a Wing Nut onto the end of the Bolt until hand tight. Be careful not to overtighten the assembly.

D. Repeat "A", "B" and "C" with second aerator over the second hole in the Door.

E. Check both aerators to make sure that the curve of the Door when it's in place on the drum and the contour of the outer portion of the aerator match, and then apply slight pressure on Wing Nuts to hold assembly firmly in place. Do not overtighten.

F. Attach Door to Drum.



STEP 7: Placement of Drum on Support Frame



- A. Check the Support Frame to make sure that all four drive wheels are pulled out against the flanges on the axle rod carriers and that the spring pins are all snugly fitted into the slots in the wheel hubs.
- B. Place the drum on the Support Frame so that when the door opening is positioned on the same side of the Frame as the drive wheel handle, the latches are on the bottom of the opening and the latch brackets are on top.
- C. Adjust the position of the drum so that it is centred and resting evenly on all four drive wheels. The ridged edges of the endcaps should be sitting firmly on the gear sections of the wheel drives.

Your CompostTumbler is now completely assembled and ready to use. Read your operating instructions manual, "How to Make Superior Compost," carefully before starting your first

batch of compost.



MANTIS UK LTD, ORCHARD HOUSE, HEMPSHAW LANE,
STOCKPORT, CHESHIRE, SK1 4LH

0800 988 4828

OR CONTACT YOUR LOCAL SUPPLIER

FREEPHONE FROM UK BT LANDLINE

If you have any questions or problems with your ComposTumbler assembly that aren't covered by this booklet, please call us at **0800 988 4828**. We'll be happy to help!